

Y69U™

UNDERGROUND TIRE



DURABILITY WITH A SUIT OF ARMOR.

- *L-4S/L-5S Loaders, Underground Vehicles, L.H.D.*

 **YOKOHAMA**®



DURABILITY. SAFETY. CONFIDENCE.

Yokohama's Y69U™ underground mining tire is an extraordinary feat in tire technology. Offering an industry-first, non-ferrous sidewall reinforcement, it provides superb protection from chipping and cutting. So when you're digging deep with the Y69U, you can do so with confidence.



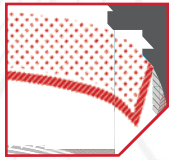
Wavy Side Profile with Zeon Super Composite

An industry first, utilizing a non-ferrous sidewall that shields the tire from chipping and cutting, to help eliminate the risk of sparks for safer operating conditions.



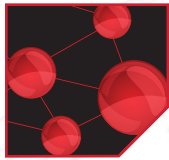
Buttress Shoulder Profile

Consists of substantially thicker rubber, for added resistance to cuts and snags in the shoulder area.



Steel Breaker Construction

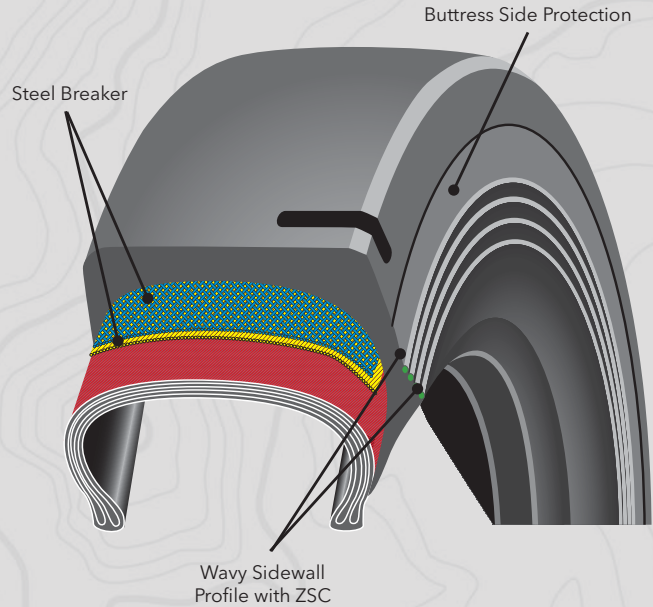
Utilizes special rubber-coated layers of steel cord between the casing and the tread to absorb shocks and prevent cuts from penetrating the casing.



Unique Tread Compound

Offers exceptional wear resistance which extends treadlife and lowers operating costs.

DURABILITY ENGINEERED FROM THE INSIDE OUT.



Y69U L-4S/L-5S

Size	Part#	Compound	Ply	Groove Depth	Rim Size	Inflated Dimensions		Loaded Dimensions		Ship Weight
						Overall Diameter (in.)	Overall Width (in.)	Static Radius (in.)	Static Width (in.)	
12.00-24 NHS*	06907	CPSC	16	55	8.50Vx24	49.4	12.9	23.2	13.7	312
17.5-25	06941	CPSC	20	87	14.00x25-1.5	55.1	17.8	25.9	18.6	621
18.00-25	06938	CPSC	32	106	13.00x25-2.5	65.7	21.1	30.7	22.5	1209
26.5-25	06918	CPSC	32	114	22.00x25-3.0	70.7	28.0	33.0	29.1	1721

*L-4S