

# OTR PRODUCT LINEUP





# CONTENTS

## TRA CLASSIFICATION

- 2 / TRA CLASSIFICATION OF OFF-THE-ROAD TIRES
- 3 / TIRES BY TYPE OF VEHICLE

## RADIAL PRODUCTS

### EARTHMOVER

- 6 / RT31/RT31+ E-3
- 6 / RB31 E-3
- 6 / RL31 E-3
- 6 / RT41 E-4
- 7 / RL45 E-4
- 7 / RB41 E-4
- 7 / RB42 E-4
- 7 / RL42 E-4

### LOADER

- 8 / RT31/RT31+ L-3
- 8 / RB31 L-3
- 8 / RT41 L-4
- 8 / RL45 L-4
- 9 / RL51 L-5
- 9 / RL52 L-5

### GRADER

- 9 / RT21 G-2

### UNDERGROUND MINING

- 9 / RT41 CPUG E-4
- 10 / R69 L-5S

### INDUSTRIAL

- 10 / RR41 IND-4

### CRANE

- 10 / RB01
- 10 / RB01 TUBE-TYPE
- 10 / RB03 TUBE-TYPE

## BIAS PRODUCTS

### EARTHMOVER

- 12 / Y67 E-3 TUBE-TYPE
- 12 / Y67 E-3
- 12 / Y67 E-3 SPECIAL APPLICATION
- 12 / Y565 E-3
- 13 / Y523 E-4
- 13 / Y523 E-4 SPECIAL APPLICATION
- 13 / Y567 E-4

### LOADER

- 14 / Y103 L-2
- 14 / Y67 L-3
- 14 / Y526 L-3
- 14 / Y575 L-3
- 15 / Y67E L-4
- 15 / Y545 L-4
- 15 / Y524 L-5
- 15 / Y524Z L-5
- 16 / Y69 L-5S
- 16 / Y69K L-5S

### GRADER

- 16 / Y103 G-2
- 16 / Y67 G-3

### UNDERGROUND MINING

- 17 / Y20 IND-3
- 17 / Y67 IND-3
- 17 / Y67 E-3
- 17 / Y69 IND-3S/IND-4S
- 18 / Y69 L-5S/IND-5S
- 18 / Y69K L-5S
- 18 / Y69U L-4S/L-5S
- 18 / Y525 L-5 TUBE-TYPE

### INDUSTRIAL

- 19 / Y573 IND-3
- 19 / Y67 IND-3
- 19 / Y69PS IND-3S
- 19 / Y523 IND-4
- 20 / Y69 IND-4S
- 20 / Y69K L-5S
- 20 / Y69 L-5S

## TECHNICAL DATA

- 21 / TECHNICAL DATA

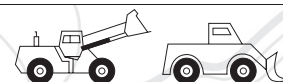
# TRA CLASSIFICATION OF OFF-THE-ROAD TIRES

## EARTHMOVER TIRES



TRA Code	Tread Type	Yokohama Code	
		Radial	Bias
E-1	Rib Regular	RT31/RT31+, RB31, RL31 RB41, RB42, RT41, RL42, RL45	Y67, Y565 Y523, Y567
E-2	Traction Regular		
E-3	Rock Regular		
E-4	Rock Deep		
E-7	Flotation		

## LOADER AND DOZER TIRES



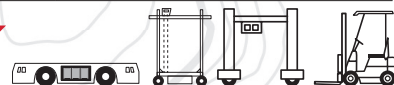
TRA Code	Tread Type	Yokohama Code	
		Radial	Bias
L-2	Traction Regular	RT31/RT31+, RB31 RT41, RL45 RL51, RL52 R69	Y103
L-3	Rock Regular		Y67, Y526, Y575
L-4	Rock Deep		Y67E, Y545
L-5	Rock Extra Deep		Y524, Y524Z, Y525
L-4S	Smooth Deep		Y69U
L-5S	Smooth Extra Deep		Y69, Y69K, Y69U

## GRADER TIRES



TRA Code	Tread Type	Yokohama Code	
		Radial	Bias
G-2	Traction Regular	RT21	Y103
G-3	Rock Regular		Y67

## INDUSTRIAL TIRES



TRA Code	Tread Type	Yokohama Code	
		Radial	Bias
IND-3, IND-3S IND-4, IND-4S IND-5, IND-5S	Traction Regular, Smooth Regular Deep, Smooth Deep Extra Deep, Smooth Extra Deep	RR41	Y20, Y67, Y69, Y69PS, Y573 Y523, Y69 Y69

## COMPACTOR TIRES



TRA Code	Tread Type	Yokohama Code	
		Radial	Bias
C-1	Smooth	N/A	N/A

## CRANE TIRES



TRA Code	Tread Type	Yokohama Code	
		Radial	Bias
---	---	RB01, RB03	N/A

**Caution:** Never replace a tire mounted on a vehicle with any tire designed for a different type of vehicle. For example, you should never place an earthmover tire on a loader.

# TIRES BY TYPE OF VEHICLE

**YOKOHAMA** off-the-road tires are classified by type of vehicle and application suitable for usage.

## DUMP TRUCKS



### (TRA Codes E-1, E-2, E-3, E-4 and E-7)

Dump trucks travel under heavy load at high speeds over relatively long distances. High heat, wear and cut resistance are all necessary requirements for dump trucks.

## SCRAPERS



### (TRA Code E-2, E-3, E-4 and E-7)

Scraper tires, of which the wide base type is most common, have the same properties as those for dump trucks with the addition of superior flotation and traction.

## FRONT-END LOADERS



### (TRA Codes L-2, L-3, L-4, L-5, L-4S and L-5S)

Front-end loaders operate on rough ground, cut and wear resistance are vital and the tires must provide stability for the loader body. Flotation and traction properties may also be necessary, depending on the working conditions. In certain cases, such as the wet and rough conditions of underground mines, the L-4S and L-5S with smooth treads are used because of their high wear and cut resistant properties.

## DOZERS



### (TRA Codes L-2, L-3, L-4 and L-5)

A dozer is used not only for dozing and leveling, but sometimes for pushing a motor grader, tires with better traction than loader tires are necessary. Other requirements vary widely depending on job conditions.

## MOTOR GRADERS



### (TRA Codes G-1, G-2 and G-3)

The motor grader, which is used for road leveling, clearing and snow removal, needs tires that provide high traction and directional stability. Other characteristics depend on job requirements.

## INDUSTRIAL VEHICLES



### (TRA Codes IND-3, IND-4, IND-5, IND-3S, IND-4S and IND-5S)

Industrial service tires need to perform in a variety of service conditions, such as port and yard service, industrial vehicles range from forklifts to pot carriers to oil drilling platforms. These tires require extreme casing durability and outstanding tire life to perform in their harsh environments.



# TIRES BY TYPE OF VEHICLE

## TOWING TRACTORS



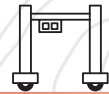
Towing tractors are used to move large aircraft and require high capacities and extra traction on cement or asphalt surfaces.

## STRADDLE CARRIERS



Straddle carriers are special vehicles that are mainly used in seaport areas to carry ocean going freight containers. These vehicles operate all day and are in constant operation which may require navigating sharp turns. These tires require extra heavy duty performance to handle heat buildup and high scrub wear.

## RUBBER TIRED GANTRY CRANES (RTG)



Rubber tired gantry cranes are special cranes mainly used to load and unload containers at seaport areas. These tires require abrasion resistance and durability.

## UNDERGROUND VEHICLES



Underground vehicles are used in underground mining operations. These tires need to be highly durable as well as highly resistant to cuts, punctures and snags, especially on the sidewalls.

## COMPACTORS



### (TRA Codes C-1)

Tire rollers use wide tread tires that uniformly distribute weight to compact road surfaces.

## MOBILE CRANES



Mobile cranes travel under heavy load at high speeds, thus these tires must have high speed durability and even wear.



Our radials are some of the toughest, longest lasting tires in the business. So no matter what kind of equipment you rely on most, you can count on Yokohama to keep them rolling.



**EARTHMOVER****RT31/RT31+ E-3**

- Extra large void-to-lug ratio, in combination with non-directional tread, enables greater traction in soft and muddy terrain.
- Enhanced tread compound provides outstanding wear, low heat generation and cut resistance.

**RB31 E-3**

- Tread designed with non-directional block pattern provides both abrasion resistance and excellent traction on soft surfaces.
- Buttress side protection and improved road stability.
- Low heat generation and flat base hexagon bead construction.

**RL31 E-3**

- Rock flush pattern provides excellent defense against cuts.
- Superior compounds generate longer life and fewer punctures.
- Sidewall construction built to handle cuts and snags.

**RT41 E-4**

- High turn-up carcass provides greater lateral stiffness and improved stability.
- Non-directional block pattern creates excellent traction.
- Buttress side protection for fewer sidewall snags and cuts.



**EARTHMOVER**

**RL45 E-4**

- Deep tread provides long life and enhanced stability.
- Compound provides low heat generation and cut resistance.
- Angled lugs promote long, even wear and improved traction.



**RB41 E-4**

- Non-directional block pattern provides both abrasion resistance and excellent traction on soft surfaces.
- Deep tread allows for maximum longevity.
- Enhanced durability with a built-in side protector.



**RB42 E-4**

- Zig-zag pattern provides excellent traction on muddy and rocky surfaces.
- Large center blocks resist cuts and enhance overall wear.
- Steel cord belts guard against tread punctures.



**RL42 E-4**

- Circumferential grooves dissipate heat for longer hauling capabilities.
- Directional tread pattern and deep, wide grooves expel mud and dirt for enhanced traction and stability.
- Buttress side protection defends the sidewall against cuts and snags.





**LOADER****RT31/RT31+ L-3**

- Extra large void-to-lug ratio and non-directional tread enables greater traction in soft and muddy terrain.
- Enhanced tread compound provides outstanding wear, low heat generation and cut resistance.

**RB31 L-3**

- Non-directional block pattern provides both abrasion resistance and excellent traction on soft surfaces.
- Flat base hexagon bead construction provides greater strength and combats rim slippage.
- Carcass construction protects against external damage and improves road stability.

**RT41 L-4**

- Belt package provides great durability and stability.
- High turn-up carcass provides greater lateral stiffness and improved road stability.
- Non-directional block pattern creates excellent traction.

**RL45 L-4**

- Deep tread depth enables longer wear and greater stability.
- Abrasion resistant non-directional block pattern offers reliable traction, side cut protection and better ride comfort.



**LOADER**

**RL51 L-5**

- Non-directional block pattern offers excellent traction, longer wear and cut resistance.
- Multi-layer, cross-ply steel belts promote durability and long-lasting performance.



**RL52 L-5**

- Unique cap compound yields superior cut resistance and longer wear.
- Flush tread pattern offers abrasion and cut resistance with a lower lug-to-void ratio.
- Buttress side protection helps prevent sidewall snags and cuts.



**GRADER**

**RT21 G-2**

- Designed with a self-cleaning non-directional block pattern.
- Good traction and flotation on soft and muddy surfaces.



**UNDERGROUND MINING**

**RT41 CPUG E-4**

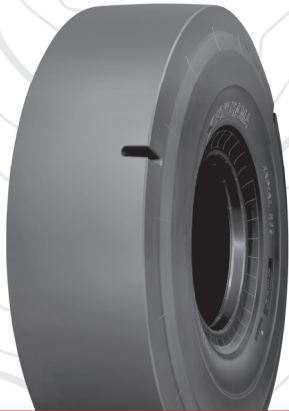
- Unique compound and proven belt package provide greater durability and stability.
- High turn-up carcass provides greater lateral stiffness and improved road stability.
- Non-directional block pattern creates excellent traction.





**UNDERGROUND MINING****R69 L-5S**

- Advanced compounds improve durability by resisting heat build-up and fighting cuts and chips
- Durable belt package and enhanced compounds create extreme durability and a stable, square footprint
- High-angle sidewall decreases sidewall stress while providing added protection

**INDUSTRIAL****RR41 IND-4**

- Two main circumferential grooves provide excellent steering stability and improve vibration caused by tread design.
- Steel cord belting acts to guard against punctures.
- Specially designed for straddle carriers.

**CRANE****RB01**

- New tread pattern and rubber compound provide excellent performance, even wear and long tread life.
- Tough casing construction for lower fuel consumption, reduced tire noise, dependable stability and improved durability.

**RB01 Tube-Type**

- Engineered to lower fuel consumption.
- Tough casing construction enables enhanced durability.
- For use on wheel cranes and all-terrain cranes.

**RB03 Tube-Type**

- Specially designed tread pattern and compound provide excellent performance, even wear and long tread life.
- Tough casing construction and optimized rib pattern provide lower fuel consumption, reduced tire noise, better driving stability and improved high speed durability.







Yokohama offers the industry's largest selection of ultra-durable, long-lasting bias ply tires. From mine service to railyards, we've got you covered.



**EARTHMOVER****Y67 E-3 Tube-Type**

- Ideal for hauling over rock, coal and log-strewn terrain.
- Tough tread resists cuts and snags.
- Less heat buildup enables smoother running over longer distances.

**Y67 E-3**

- For hauling over rock, coal and log-strewn terrain.
- Tough tread offers resistance to cuts and snags.
- Less heat buildup enables smoother running over longer distances than deep tread tires.

**Y67 E-3 Special Application**

- Designed with a durable tread for tough terrain.
- Reduced heat build-up for enhanced reliability over long distances.

**Y565 E-3**

- Tough tread resists cuts and snags.
- Less heat build-up enables smoother running over longer distances than the deep tread.



**EARTHMOVER**

**Y523 E-4**

- Specially designed for dump truck use under highly abrasive conditions.
- Large ground contact area of the wide, deep double chevron uniform pattern provides good cut resistance and long service life.



**Y523 E-4 Special Application**

- For use on dump trucks in high-abrasion conditions.
- Uniform pattern provides good cut resistance and long service life.



**Y567 E-4**

- Advanced composition of enhanced tread compound provides outstanding wear, low heat generation and cut resistance.
- Specially designed for long-haul applications.





**LOADER****Y103** L-2

- Provides good traction and flotation on muddy ground.
- Directional tread pattern provides excellent self-cleaning properties.

**Y67** L-3

- Tough tread protects from cuts and snags.
- Wide ground contact area lengthens service life.

**Y526** L-3

- Unique symmetrical tread pattern and reinforced outer sidewall help prevent cuts.

**Y575** L-3

- Unique semi-level tread pattern with a large contact area for improved stability and longer service life.



**LOADER**

**Y67E L-4**

- Suited for loaders and dozers on rock, coal and log-strewn terrain.
- Deep tread provides good wear and cut resistance.



**Y545 L-4**

- Excels over rock, coal and log-strewn environments.
- Deep tread offers excellent wear with superb cut resistance.
- Steel belts in low aspect ratio tires provide enhanced protection against rock penetration for longer life cycles.



**Y524 L-5**

- Designed for loaders and dozers on rock, coal and log-strewn terrain.
- Unique profile with side protector for improved resistance to shoulder and sidewall cuts.



**Y524Z L-5**

- Ideal for rock, coal and ore mining environment.
- Half slick asymmetric tread pattern is specifically designed for superior tread and sidewall cut resistance.



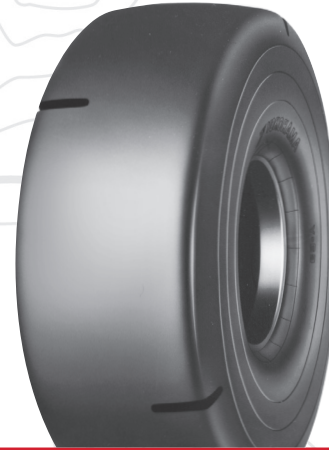


**LOADER****Y69 L-5S**

- Deep tread and reinforced sidewalls offer superior resistance to damage and wear.

**Y69K L-5S**

- Modified sidewall profile for increased resistance to side wall damage.
- Extra-deep reinforced tread for longer treadwear and enhanced durability in extreme underground mining conditions.
- Specially formulated tread compounds extend treadlife.

**GRADER****Y103 G-2**

- Directional tread pattern provides excellent self-cleaning properties.
- Optimum traction and flotation on muddy surface.

**Y67 G-3**

- Tough tread prevents cuts and snags.
- Large ground contact provides long service life.



**UNDERGROUND MINING****Y20 IND-3**

- Tough tread protects against cuts and snags
- Wide ground contact area lengthens service life.
- New tread rubber compound provides outstanding wear and cut resistance.

**Y67 IND-3**

- Non-directional block pattern offers excellent traction, longer wear and cut resistance.
- Specially-designed high durable spec enables increased load capacity.
- Special compound generates less heat and provides additional scrub-resistance.
- Optimized rubber-to-void ratio provides better stability.

**Y67 E-3**

- Advanced composition provides exceptional cut and chip resistance producing outstanding wear and durability.
- Steel breaker construction provides extra case protection.
- Optimized rubber-to-void ratio enhances balance between cut-resistance and traction, increasing tread life and resilience.

**Y69 IND-3S/IND-4S**

- Optimized tread volume and ID specification handles heavier loads.
- Wider tread base provides better ground contact and stability.
- Special under-tread compounds and an over-ply casing resist heat generation.
- Deep tread and reinforced bead and sidewall increase durability in tough operations.



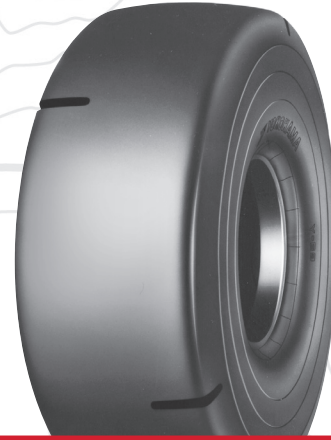


**UNDERGROUND MINING****Y69 L-5S/IND-5S**

- Deep tread and reinforced sidewalls offer superior resistance to damage and wear.

**Y69K L-5S**

- Modified sidewall profile for increased resistance to side wall damage.
- Extra-deep reinforced tread for longer treadwear and enhanced durability in mining conditions.
- Specially formulated tread compounds extend treadlife.

**Y69U L-4S/L-5S**

- Modified sidewall profile for increased resistance to side wall damage.
- Extra-deep reinforced tread for longer treadwear and enhanced durability in mining conditions.
- Specially formulated tread compounds extend treadlife.

**Y525 L-5 Tube-Type**

- Deep tread and reinforced sidewalls offer superior resistance to damage and wear.



**INDUSTRIAL**

**Y573 IND-3**

- Specially designed for towing tractors, this tire provides a combination of excellent wear resistance and outstanding traction.



**Y67 IND-3**

- Reinforced bead and sidewall area provide exceptional durability.
- Highly durable spec enables increased load capacity.
- Special compounding enables less heat generation and additional scrub resistance.
- Optimal rubber-to-void ratio provides better stability while deeper tread depths enhance traction.



**Y69PS IND-3S**

- Suited for vehicles such as straddle carriers, container handlers and towing tractors used at airports.
- Large tread width and ground contact area for good traction on paved surfaces.
- Compound specifically designed to resist wear in high-scrub applications.



**Y523 IND-4**

- Specially designed for use under highly abrasive conditions.
- Large ground contact area of wide, deep double chevron uniform pattern provides good cut resistance and long service life.



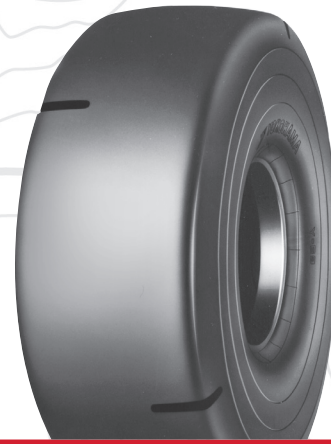


**INDUSTRIAL****Y69 IND-4S**

- Optimized tread volume and ID specification handles heavier loads.
- Wider tread base provides better ground contact and stability.
- Tread compound optimized for longer wear on concrete and asphalt surfaces.
- Special under-tread compounds and an over-ply casing resist heat generation.

**Y69K L-5S**

- Modified sidewall profile for increased resistance to side wall damage.
- Extra-deep reinforced tread for longer treadwear and enhanced durability in industrial conditions.
- Specially formulated tread compounds extend treadlife.

**Y69 L-5S**

- Optimized tread volume and ID spec handles heavier loads.
- Wider treadface provides better ground contact and stability.
- Compound is optimized for long wear on concrete and asphalt surfaces.
- Deep tread and reinforced bead and sidewall increase durability in tough operations.



Tire Size	Part#	Compound	Star Mark	Groove Depth	Rim Size	Inflated Dimensions		Static Loaded Radius (in.)	Static Loaded Width (in.)	Ship Weight
						Overall Diameter (in.)	Overall Width (in.)			
<b>RADIAL</b>										
<b>EARTHMOVER</b>										
<b>RT31 / RT31+ E-3</b>										
20.5R25	03167	CP	**	51	17.00x25-2.0	58.7	21.1	26.6	23.1	547
23.5R25	03170	CP	**	45	19.50x25-2.5	63.0	24.1	28.3	26.5	713
750/65R25	03169	CP	**	55	24.00x25-3.0	64.0	29.5	28.7	32.2	1006
26.5R25	03173	CP	**	57	22.00x25-3.0	68.1	26.4	30.6	29.4	1016
<b>RB31 E-3</b>										
20.5R25	03152	CP	**	43	17.00x25-2.0	58.1	20.9	26.6	23.1	540
23.5R25	03155	CP	**	45	19.50x25-2.5	63.0	24.1	28.3	26.5	777
26.5R25	03191	CP	**	49	22.00x25-3.0	68.1	26.4	30.9	29.3	1068
29.5R25	03127	CP	**	60	25.00x25-3.5	72.8	29.9	32.7	33.1	1298
<b>RL31 E-3</b>										
17.5R25	03160	CP	**	40	14.00x25-1.5	52.8	17.5	24.5	19.1	397
20.5R25	03175	CP	**	44	17.00x25-2.0	58.9	21.1	27.0	22.5	627
23.5R25	03172	CP	**	51	19.50x25-2.5	63.0	25.2	28.3	26.2	896
<b>RT41 E-4</b>										
23.5R25	04122	CP	**	68	19.50x25-2.5	63.5	23.9	28.7	26.5	810
26.5R25	04120	CP	**	76	22.00x25-3.0	68.2	26.4	30.7	29.1	1084
29.5R25	04121	CP	**	82	25.00x25-3.5	73.4	29.9	33.3	32.8	1421
<b>RL45 E-4</b>										
26.5R25	45001	CP	**	76	22.00x25-3.0	69.3	26.6	30.6	29.3	1169
29.5R25	45003	CP	**	82	25.00x25-3.5	74.8	30.3	33.9	33.5	1673
<b>RB41 E-4</b>										
14.00R25	04153	REG	***	48	10.00x25-1.5	55.3	15.5	25.7	17.0	415
16.00R25	04150	CP	**	57	11.25x25-2.0	60.3	17.7	27.8	19.7	553
<b>RB42 E-4</b>										
18.00R33	04201	CP	**	70	13.00x33-2.5	73.6	20.0	33.7	22.4	968
24.00R35	04210	CP-S	**	80	17.00x35-3.5	85.4	26.0	38.5	29.3	1620
24.00R35	04203	CP	**	80	17.00x35-3.5	85.4	25.8	38.5	29.3	1613
24.00R35	04206	REG	**	80	17.00x35-3.5	85.4	25.8	38.5	29.3	1598
27.00R49	04209	CP-S	**	93	19.50x49-4.0	105.6	28.9	48.0	32.7	2929
27.00R49	04204	CP	**	93	19.50x49-4.0	105.6	28.9	48.0	32.7	2934
27.00R49	04205	REG	**	93	19.50x49-4.0	105.6	28.9	48.0	32.7	2921
33.00R51	04207	CP	**	115	24.00x51-5.0	120.5	36.0	54.3	40.2	5071
33.00R51	04208	REG	**	115	24.00x51-5.0	120.5	36.0	54.3	40.2	5071
<b>RL42 E-4</b>										
18.00R33	42000	CP	**	63	13.00x33-2.5	73.2	20.0	33.6	22.4	966
24.00R35	42006	CP	**	74	17.00x35-3.5	84.9	26.1	38.5	29.5	1719
<b>LOADER</b>										
<b>RT31/ RT31+ L-3</b>										
20.5R25	03168	CP	*	51	17.00x25-2.0	58.7	21.1	25.9	24.0	547
23.5R25	03171	CP	*	45	19.50x25-2.5	63.0	24.1	27.7	27.3	696
26.5R25	03174	CP	*	57	22.00x25-3.0	68.1	26.4	29.9	30.1	1016
<b>RB31 L-3</b>										
17.5R25	03150	CP	*	39	14.00x25-1.5	53.1	17.4	23.9	19.7	363
20.5R25	03151	CP	*	43	17.00x25-2.0	58.1	20.9	25.9	24.0	540
23.5R25	03154	CP	*	45	19.50x25-2.5	63.0	24.1	27.7	27.3	760
26.5R25	03157	CP	*	49	22.00x25-3.0	68.1	26.4	30.0	30.0	1066
29.5R25	03128	CP	*	60	25.00x25-3.5	72.8	29.9	31.7	34.1	1298
<b>RT41 L-4</b>										
23.5R25	04123	CP	*	68	19.50x25-2.5	63.5	23.9	27.9	27.2	810
26.5R25	04124	CP	*	76	22.00x25-3.0	68.2	26.4	29.8	30.0	1084
29.5R25	04125	CP	*	82	25.00x25-3.5	73.4	29.9	32.8	33.7	1434



Tire Size	Part#	Compound	Star Mark / LI/SS / Ply Rating	Groove Depth	Rim Size	Inflated Dimensions		Static Loaded Radius (in.)	Static Loaded Width (in.)	Ship Weight
						Overall Diameter (in.)	Overall Width (in.)			
<b>RL45 L-4</b>										
26.5R25	45002	CP	*	76	22.00x25-3.0	69.3	26.6	30.6	30.3	1169
29.5R25	45004	CP	*	82	25.00x25-3.5	74.8	30.3	33.1	34.4	1673
<b>RL51 L-5</b>										
23.5R25	51501	CP	*	99	19.50x25-2.5	65.3	24.4	29.1	27.3	1097
<b>RL52 L-5</b>										
26.5R25	52090	CP	*	121	22.00x25-3.0	70.2	27.4	31.5	29.0	1574
<b>GRADER</b>										
<b>RT21 G-2</b>										
14.00R24 TG	02101	REG	*	31	8.00TGx24	53.0	15.1	24.4	17.0	294
<b>UNDERGROUND MINING</b>										
<b>RT41 CPUG E-4</b>										
23.5R25	04128	CPUG	**	68	19.50x25-2.5	63.5	23.9	28.7	26.5	819
26.5R25	04126	CPUG	**	76	22.00x25-3.0	68.2	26.4	30.7	29.1	1085
29.5R25	04127	CPUG	**	82	25.00x25-3.5	73.4	29.9	33.3	32.8	1425
<b>R69 L-5S</b>										
18.00R25	46901	CPUG	**	107	13.00x25-2.5	65.9	19.7	29.9	22.5	1152
<b>INDUSTRIAL</b>										
<b>RR41 IND-4</b>										
16.00R25	04151	ID	***	66	11.25x25-2.0	59.0	16.7	25.8	19.6	594
<b>CRANE</b>										
<b>RB01</b>										
385/95R25	00350	MC	170F	25	10.00x25-1.5	53.3	15.1	24.8	16.5	321
445/95R25	00129	MC	174F	29	11.25x25-2.0	58.5	17.5	27.2	19.2	436
<b>RB01 TUBE-TYPE</b>										
14.00R24 NHS	00130	MC	***	28	10.00Wx24-2.0	53.3	15.1	24.8	16.5	321
<b>RB03 TUBE-TYPE</b>										
14.00R24 NHS	00134	MC	***	30	10.00Wx24-2.0	53.2	14.8	24.7	16.5	322
<b>BIAS</b>										
<b>EARTHMOVER</b>										
<b>Y67 E-3 TUBE-TYPE</b>										
14.00-24 NHS	06715	CP	24	35	10.00Wx24	53.0	15.0	24.6	16.1	286
14.00-24 NHS	06716	CP	28	35	10.00Wx24	53.0	15.0	24.6	16.1	303
<b>Y67 E-3</b>										
16.00-24 NHS	06722	REG	24	43	11.25x24-2.0	58.1	17.5	27.0	18.4	428
14.00-25	06708	CP	24	35	10.00x25-1.5	53.0	15.0	24.6	16.1	292
16.00-25	06709	CP	24	43	11.25x25-2.0	58.1	17.5	27.0	18.4	432
16.00-25	06710	CP	28	43	11.25x25-2.0	58.1	17.5	27.0	18.4	451
18.00-25	06732	CP	32	49	13.00x25-2.5	63.0	20.1	29.0	21.0	558
26.5-25	06759	REG	26	57	22.00x25-3.0	68.1	27.6	30.6	28.8	844
29.5-25	06762	REG	28	62	25.00x25-3.5	73.9	30.6	32.4	32.5	1068
26.5-29	06760	REG	26	51	22.00x29-3.0	72.2	27.2	32.6	28.5	894
29.5-29	06764	CP	34	62	25.00x29-3.5	76.9	30.3	34.5	31.7	1236
33.25-29	16752	CP	26	58	27.00x29-3.5	81.9	33.4	36.4	34.4	1547
33.25-29	16753	CP	32	58	27.00x29-3.5	81.9	33.4	46.4	34.4	1597
29.5-35	06766	REG	34	50	25.00x35-3.5	83.5	30.6	38.0	32.2	1465
33.25-35	16711	CP	32	59	27.00x35-3.5	88.5	33.6	39.5	35.4	1690
33.25-35	06770	REG	38	59	27.00x35-3.5	88.5	33.6	39.5	35.4	1800
37.25-35	16701	CP	30	64	31.00x35-4.0	94.1	37.8	41.7	39.8	2124
37.25-35	16751	CPBP	30	64	31.00x35-4.0	94.1	37.8	41.7	39.8	1852
37.25-35	16715	CP	36	64	31.00x35-4.0	94.1	37.8	41.7	39.8	2150
37.5-39	16710	CP	44	68	32.00x39-4.5	99.0	38.1	44.8	40.0	2541
37.5-39	16712	REG	52	68	32.00x39-4.5	99.0	38.1	44.8	40.0	2606

Tire Size	Part#	Compound	Ply Rating	Groove Depth	Rim Size	Inflated Dimensions		Static Loaded Radius (in.)	Static Loaded Width (in.)	Ship Weight
						Overall Diameter (in.)	Overall Width (in.)			
<b>Y67 E-3 SPECIAL APPLICATION</b>										
33.25-29	16766	CP	32	58	27.00x29-3.5	81.9	33.4	36.4	34.4	1691
37.25-35	16714	CP	36	64	31.00x35-4.0	94.1	37.8	41.7	39.8	2244
37.5-39	16750	CP	52	68	32.00x39-4.5	99.0	38.1	44.8	40.0	2781
37.5-39	16741	CP	52	68	32.00x39-4.5	99.0	38.1	44.8	40.0	2976
<b>Y565 E-3</b>										
36.00-51	03179	RET	58	65	26.00x51-5.0	126.0	41.1	57.5	43.3	4900
36.00-51	03180	RET	66	65	26.00x51-5.0	126.0	41.1	57.5	43.3	5204
<b>Y523 E-4</b>										
16.00-25	02326	CPC	28	75	11.25x25-2.0	60.6	17.4	28.5	18.4	607
18.00-25	52304	ID	32	77	13.00x25-2.5	65.0	20.4	30.4	21.3	818
18.00-33	52315	CPC	32	71	13.00x33-2.5	72.8	20.4	34.2	21.3	868
18.00-33	52318	RER	32	71	13.00x33-2.5	72.8	20.4	34.2	21.3	865
21.00-35	02302	CPC	36	80	15.00x35-3.0	80.5	23.2	37.2	24.5	1221
21.00-35	02336	CPC	36	80	15.00x35-3.0	80.5	23.2	23.2	24.5	1355
21.00-35	52320	RER	40	80	15.00x35-3.0	80.5	23.2	37.2	24.5	1238
24.00-35	02320	CPC	42	81	17.00x35-3.5	84.5	26.2	39.0	28.0	1584
24.00-35	52322	RER	42	81	17.00x35-3.5	84.5	26.2	39.0	28.0	1551
24.00-49	52339	CPC	42	81	17.00x49-3.5	99.6	25.8	46.6	27.4	2243
27.00-49	52341	CPC	48	90	19.50x49-4.0	105.5	29.4	49.0	31.1	2501
27.00-49	52373	RER	48	90	19.50x49-4.0	105.5	29.4	49.0	31.1	2476
36.00-51	52345	CPC	50	116	26.00x51-5.0	125.9	40.9	58.1	42.9	5644
40.00-57	02307	RET	68	117	29.00x57-6.0	139.8	44.4	63.9	47.2	7788
40.00-57	02308	RET	76	117	29.00x57-6.0	139.8	44.4	63.9	47.2	7787
<b>Y523 E-4 SPECIAL APPLICATION</b>										
24.00-35	52330	CPC	42	81	17.00x35-3.5	84.5	26.2	39.0	28.0	1661
27.00-49	02328	CPC	48	90	19.50x49-4.0	105.5	29.4	49.0	31.1	2611
33.00-51	52329	CP-S	50	104	24.00x51-5.0	119.6	36.5	55.3	38.8	4975
<b>Y567 E-4</b>										
33.00-51	56755	RER	50	104	24.00x51-5.0	119.6	36.5	55.3	38.8	4201
33.00-51	56750	CPC	58	104	24.00x51-5.0	119.6	36.5	55.3	38.8	4479
33.00-51	56752	RET	58	104	24.00x51-5.0	119.6	36.5	55.3	38.8	4741
33.00-51	56754	CP-S	50	104	24.00x51-5.0	119.6	36.5	55.3	38.8	4847
40.00-57	56751	RER	68	117	24.00x57-6.0	139.5	44.4	63.8	47.2	7450
40.00-57	56753	CPC	68	117	29.00x57-6.0	139.5	44.4	63.8	47.2	7494
<b>LOADER</b>										
<b>Y103 L-2</b>										
15.5-25	10350	CP	12	32	12.00x25-1.3	50.6	15.4	22.6	17.0	202
17.5-25	10352	CP	12	34	14.00x25-1.5	53.1	17.1	24.4	18.1	239
20.5-25	10361	CP	12	40	17.00x25-2.0	58.9	21.1	25.5	23.0	325
20.5-25	10362	CP	16	40	17.00x25-2.0	58.9	21.1	25.5	23.0	346
23.5-25	10364	CP	16	45	19.50x25-2.5	63.8	24.1	27.0	26.8	517
<b>Y67 L-3</b>										
13.00-24 TG	06701	CP-S	16	35	8.00TGx24	50.4	13.7	23.1	15.1	262
17.5-25	06705	CP	12	38	14.00x25-1.5	53.1	17.4	23.6	19.0	265
17.5-25	06706	CP	16	38	14.00x25-1.5	53.1	17.4	23.6	19.0	282
20.5-25	06723	CP	16	42	17.00x25-2.0	59.0	20.8	25.6	22.8	366
23.5-25	06726	CP	16	53	19.50x25-2.5	63.2	23.5	27.9	25.0	583
<b>Y526 L-3</b>										
23.5-25	52632	CP	16	51	19.50x25-2.5	63.4	24.2	28.0	26.1	738
<b>Y575 L-3</b>										
17.5-25	57505	CP	12	38	14.00x25-1.5	52.8	17.1	23.4	18.6	260
17.5-25	57506	CP	16	38	14.00x25-1.5	52.8	17.1	23.4	18.6	277
20.5-25	57501	CP	12	41	17.00x25-2.0	58.8	20.9	26.1	22.5	362



Tire Size	Part#	Compound	Ply Rating	Groove Depth	Rim Size	Inflated Dimensions		Static Loaded Radius (in.)	Static Loaded Width (in.)	Ship Weight
						Overall Diameter (in.)	Overall Width (in.)			
20.5-25	57508	CP	20	41	17.00x25-2.0	58.8	20.9	26.1	22.5	427
23.5-25	57504	CP	16	53	19.50x25-2.5	63.2	23.8	27.9	25.4	581
23.5-25	57507	CP	20	53	19.50x25-2.5	63.2	23.8	27.9	25.4	612
26.5-25	57509	CP	20	54	22.00x25-3.0	68.5	27.2	30.3	28.9	875
26.5-25	57512	CP	24	54	22.00x25-3.0	68.5	27.2	30.3	28.9	910
29.5-25	57514	CP	28	62	25.00x25-3.5	73.0	30.1	32.0	32.7	1256
<b>Y67E L-4</b>										
29.5-29	06774	CP	28	99	25.00x29-3.5	79.3	30.3	35.6	32.4	1654
<b>Y545 L-4</b>										
23.5-25	54503	CP	20	71	19.50x25-2.5	65.4	24.2	29.9	26.0	896
23.5-25	54502	CP	24	71	19.50x25-2.5	65.4	24.2	29.9	26.0	922
26.5-25	54505	CP	20	86	22.00x25-3.0	70.3	27.7	31.5	30.1	1157
26.5-25	54506	CP	24	86	22.00x25-3.0	70.3	27.7	31.5	30.1	1198
29.5-25	54501	CP	28	92	25.00x25-3.5	74.8	30.9	33.3	33.1	1490
35/65-33	54512	REG	30	79	28.00x33-3.5	82.0	35.5	37.5	36.4	2244
35/65-33	54515	REG	42	79	28.00x33-3.5	82.0	35.5	37.5	36.4	2395
45/65-45	54507	CP	58	89	36.00x45-4.5	107.5	45.3	48.8	47.4	4944
<b>Y524 L-5</b>										
20.5-25	52401	CP	16	101	17.0x25-2.00	61.3	21.2	28.4	22.6	754
20.5-25	52402	CP	20	101	17.0x25-2.00	61.3	21.2	28.4	22.6	793
23.5-25	52403	CP	16	111	19.50x25-2.5	65.6	24.4	30.1	26.1	1037
23.5-25	52404	CP	20	111	19.50x25-2.5	65.6	24.4	30.1	26.1	1069
26.5-25	52405	CP	20	122	22.00x25-3.0	70.7	26.9	32.3	28.4	1365
26.5-25	52406	CP	24	122	22.00x25-3.0	70.7	26.9	32.3	28.4	1369
29.5-25	52431	CP	28	140	25.00x25-3.5	75.1	30.5	34.2	32.5	1870
29.5-29	52409	CP	28	134	25.00x29-3.5	80.3	30.4	36.0	32.7	1852
35/65-33	52433	CP	24	121	28.00x33-3.5	81.7	35.4	37.5	36.7	2385
35/65-33	52444	CP	30	121	28.00x33-3.5	81.7	35.4	37.5	36.7	2453
35/65-33	52436	CP	42	121	28.00x33-3.5	81.7	35.4	37.5	36.7	2686
45/65-45	52427	CP	38	145	36.00x45-4.5	107.9	46.5	49.6	48.4	4948
45/65-45	52420	CP	50	145	36.00x45-4.5	107.9	46.5	49.6	48.4	5418
45/65-45	52442	CP	58	145	36.00x45-4.5	107.9	46.5	49.6	48.4	6230
<b>Y524Z L-5</b>										
35/65-33	52443	CP	42	121	28.00x33-3.5	81.3	35.7	37.6	36.8	2821
45/65-45	52440	CP	58	145	36.00x45-4.5	107.9	46.5	49.6	48.4	5972
<b>Y69 L-5S</b>										
12.00-24 NHS	06902	CP	16	69	8.50Vx24	50.4	13.1	23.8	14.0	326
14.00-24 NHS	06954	CP	20	79	10.00Wx24	53.7	15.0	25.7	15.5	460
17.5-25	06952	CP	16	87	14.00x25-1.5	54.7	16.9	25.6	17.9	562
17.5-25	06955	CP	20	87	14.00x25-1.5	54.7	16.9	25.6	17.9	582
18.00-25	06932	CP	28	105	13.00x25-2.5	65.0	21.0	29.6	22.5	968
18.00-25	06906	CP	32	105	13.00x25-2.5	65.0	21.0	29.6	22.5	1187
20.5-25	06933	CP	16	102	17.00x25-2.0	60.8	21.3	28.1	22.2	761
23.5-25	06935	CP	20	117	19.50x25-2.5	64.4	24.3	29.4	25.7	1062
<b>Y69K L-5S</b>										
18.00-25	06906	CP	32	105	13.00x25-2.5	65.0	21.0	29.6	22.5	1187
26.5-25	06905	CP	32	114	22.00x25-3.0	70.5	27.4	32.5	28.5	1697
29.5-29	06965	CP	34	136	25.00x29-3.5	79.5	30.8	36.9	32.3	2267
<b>GRADER</b>										
<b>Y103 G-2</b>										
13.00-24 TG	10356	CP	12	34	8.00TGx24	50.4	13.6	22.7	15.1	173
14.00-24 TG	10357	CP	12	36	8.00TGx24	52.8	14.6	23.8	16.1	206

Tire Size	Part#	Compound	Ply Rating	Groove Depth	Rim Size	Inflated Dimensions		Static Loaded Radius (in.)	Static Loaded Width (in.)	Ship Weight
						Overall Diameter (in.)	Overall Width (in.)			
<b>Y67 G-3</b>										
13.00-24 TG	06719	CP	12	35	8.00TGx24	50.4	13.1	23.1	14.1	203
14.00-24 TG	06720	CP	16	35	8.00TGx24	53.2	14.3	24.6	15.3	261
16.00-24 TG	06721	CP	16	43	10.00Vx24	58.1	17.5	27.0	18.4	404
<b>UNDERGROUND MINING</b>										
<b>Y20 IND-3</b>										
39X15-20 NHS	02004	ID	36	29	11.00TGx20	39.6	13.4	TBD	TBD	189
<b>Y67 IND-3</b>										
32X15-15 NHS	26761	ID	28	24	11.50x15	32.7	13.0	14.7	13.3	136
35X15-15 NHS	26762	ID	32	33	10.50x15	36.0	14.3	16.6	14.6	197
36X11-15 NHS	26763	ID	24	24	7.50x15	36.0	10.7	16.4	11.0	148
38X16-15 NHS	26764	ID	36	32	11.50x15	39.1	14.9	17.4	15.5	210
42X13-20 NHS	16782	ID	36	26	10.00Wx20	42.5	12.8	19.9	13.7	210
42X18-20 NHS	16788	ID	36	27	15.00Tx20	43.7	16.9	20.5	18.1	276
44X15-20 NHS	16784	ID	36	31	10.00Wx20	45.4	13.7	20.6	14.6	278
44X18-20 NHS	16763	ID	36	32	15.00Tx20	45.3	17.4	20.7	18.2	373
50X20-20 NHS	16769	ID	36	35	15.00Tx20	49.6	18.8	22.7	19.8	483
12.00-24 NHS	16787	ID	28	33	8.50Vx24	48.8	12.5	22.0	13.8	206
<b>Y67 E-3</b>										
10.00-20 NHS	16757	RER	24	26	7.50Vx20	41.7	11.0	19.6	11.6	150
12.00-20 NHS	16759	CPC	24	32	8.50Vx20	44.7	12.8	21.0	13.4	214
12.00-20 NHS	16786	CP-S	28	32	8.50Vx20	44.7	12.8	21.0	13.4	238
14.00-20 NHS	16765	CP-S	32	35	10.00Wx20	49.2	15.2	23.0	15.8	354
<b>Y69 IND-3S / IND-4S</b>										
14.00-24 NHS	06914	ID	30	58	10.00Wx24	53.9	15.4	25.7	16.0	451
16.00-25	06919	ID	32	55	11.25x25-2.0	57.9	16.4	25.9	18.0	684
18.00-25	06915	ID	40	74	13.00x25-2.5	65.0	20.9	30.0	22.2	1003
18.00-25	06940	ID	40	74	13.00x25-2.5	64.5	21.1	29.7	22.5	1008
21.00-25	06972	ID	40	71	15.00x25-3.0	70.0	23.7	31.4	25.2	1171
21.00-35	06917	ID	42	81	15.00x35-3.0	80.2	23.6	36.2	25.6	1575
<b>Y69 L-5S / IND-5S</b>										
12.00-24 NHS	06902	CP	16	69	8.50Vx24	50.4	13.1	23.8	14.0	326
14.00-24 NHS	06954	CP	20	79	10.00Wx24	53.7	15.0	25.7	15.5	460
17.5-25	06952	CP	16	87	14.00x25-1.5	54.7	16.9	25.6	17.9	562
17.5-25	06955	CP	20	87	14.00x25-1.5	54.7	16.9	25.6	17.9	582
18.00-25	06932	CP	28	104	13.00x25-2.5	65.0	21.0	29.6	22.5	968
18.00-25	06916	ID	40	106	13.00x25-2.5	64.8	20.9	30.0	22.2	1074
20.5-25	06933	CP	16	102	17.00x25-2.0	60.8	21.3	28.1	22.2	761
23.5-25	06935	CP	20	117	19.50x25-2.5	64.6	24.3	29.4	25.7	1062
<b>Y69K L-5S</b>										
18.00-25	06906	CP	32	105	13.00x25-2.5	65.0	21.0	29.6	22.5	1187
26.5-25	06905	CP	32	114	22.00x25-3.0	70.5	27.4	32.5	28.5	1697
29.5-29	06965	CP	34	136	25.00x29-3.5	79.5	30.8	36.9	32.3	2267
<b>Y69U L-4S/L-5S</b>										
12.00-24 NHS	06907	CPSC	16	55	8.50Vx24	49.4	12.9	23.2	13.7	312
17.5-25	06941	CPSC	20	87	14.00x25-1.5	55.1	17.8	25.9	18.6	621
18.00-25	06938	CPSC	32	106	13.00x25-2.5	65.7	21.1	30.7	22.5	1209
26.5-25	06918	CPSC	32	114	22.00x25-3.0	70.7	28.0	33.0	29.1	1721
<b>Y525 L-5 TUBE-TYPE</b>										
12.00-24 NHS	52503	CP	20	74	8.50Vx24	50.4	13.0	23.5	14.2	310



Tire Size	Part#	Compound	Ply Rating	Groove Depth	Rim Size	Inflated Dimensions		Static Loaded Radius (in.)	Static Loaded Width (in.)	Ship Weight
						Overall Diameter (in.)	Overall Width (in.)			
<b>INDUSTRIAL</b>										
<b>Y573 IND-3</b>										
17.5-25	57301	ID	36	18	14.00x25-1.5	53.6	17.4	24.1	18.0	595
<b>Y67 IND-3</b>										
12.00-24 NHS	16746	ID	20	33	8.50Vx24	48.8	12.5	22.0	13.8	205
14.00-24 NHS	16780	ID	28	35	10.00Vx24	53.4	15.3	24.1	16.5	346
16.00-25	16747	ID	36	43	11.25x25-2.0	58.7	17.6	26.3	19.2	535
18.00-25	16719	ID	40	49	13.00x25-2.5	63.8	20.2	28.4	21.7	782
21.00-25	16743	ID	40	51	15.00x25-3.0	69.1	23.5	30.4	25.2	964
29.5-25	16793	ID	34	62	25.00x25-3.5	73.3	30.1	TBD	TBD	1207
33.25-29	16767	ID	38	58	25.00x29-3.5	82.6	32.8	37.1	34.7	1698
21.00-35	16781	ID	40	53	15.00x35-3.0	78.9	22.8	36.8	24.5	1172
33.25-35	16749	ID	44	59	27.00x35-3.5	89.1	33.6	39.0	35.6	1999
<b>Y69PS IND-3S</b>										
16.00-25	06919	ID	32	55	11.25x25-2.0	57.9	16.4	25.9	18.0	684
<b>Y523 IND-4</b>										
18.00-25	52304	ID	32	77	13.00x25-2.5	65.0	20.4	30.4	21.3	818
18.00-25	02343	ID	40	77	13.00x25-2.5	65.0	20.4	30.4	21.3	832
18.00-33	05326	ID	40	71	13.00x33-2.5	72.8	20.4	34.2	21.3	1011
18.00-33	02335	ID	40	71	13.00x33-2.5	72.8	20.4	34.2	21.3	1097
33.00-51	02355	ID	58	104	24.00x51-5.0	120.3	36.8	55.7	38.7	4741
36.00-51	05230	ID	58	116	26.00x51-5.0	125.9	40.9	54.3	45.3	5905
40.00-57	02338	ID	76	117	29.00x57-6.0	141.1	45.0	61.7	50.0	7979
<b>Y69 IND-4S</b>										
14.00-24 NHS	06914	CP	30	58	10.00Wx24	53.9	15.4	25.7	16.0	451
18.00-25	06915	ID	40	74	13.00x25-2.5	65.0	20.9	30.0	22.2	1003
18.00-25	06916	ID	40	106	13.00x25-2.5	64.8	20.9	30.0	22.2	1074
21.00-25	06972	CP	40	71	15.00x25-3.0	70.0	23.7	31.4	25.2	1171
18.00-33	06977	ID	40	74	13.00x33-2.5	73.5	20.2	33.2	22.2	1175
<b>Y69K L-5S</b>										
29.5-29	06965	CP	34	136	25.00x29-3.5	79.5	30.8	36.9	32.3	2267
<b>Y69 L-5S</b>										
12.00-24 NHS	06902	CP	16	69	8.50Vx24	50.4	13.1	23.8	14.0	326
14.00-24 NHS	06954	CP	20	79	10.00Wx24	53.7	15.0	25.7	15.5	460
17.5-25	06952	CP	16	87	14.00x25-1.5	54.7	16.9	25.6	17.9	562
17.5-25	06955	CP	20	87	14.00x25-1.5	54.7	16.9	25.6	17.9	582
18.00-25	06932	CP	28	105	13.00x25-2.5	65.0	21.0	29.6	22.5	968
18.00-25	06906	CP	32	105	13.00x25-2.5	65.0	21.0	29.6	22.5	1187
20.5-25	06933	CP	16	102	17.00x25-2.0	60.8	21.3	28.1	22.2	761
23.5-25	06935	CP	20	117	19.50x25-2.5	64.6	24.3	29.4	25.7	1062
26.5-25	06905	CP	32	114	22.00x25-3.0	70.5	27.4	32.5	28.5	1697



1 MacArthur Place, Suite 800, Santa Ana, CA 92707  
Toll Free: 800.423.4544

[YokohamaOTR.com](http://YokohamaOTR.com)