

RL45™

RADIAL TIRE



ONE **TOUGH** RADIAL.

- *E-4 Articulated Dump Trucks and Scrapers*
- *L-4 Front-End Loaders*

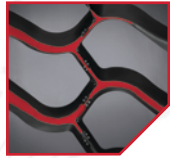
 **YOKOHAMA®**



RL45™ RADIAL TIRE

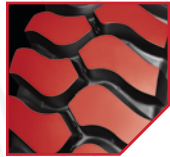
FOR THE TOUGHEST APPLICATIONS

Built to last through the most challenging hauls of E-4 articulated dump trucks and L-4 front-end loaders, the deep tread of the RL45™ delivers longer, better wear on the roughest of surfaces. It also offers added stability, and its sturdy construction offers optimum cut resistance for a longer overall life.



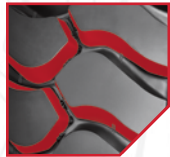
Advanced Composition

Provides outstanding wear, low heat generation and cut resistance due to an enhanced tread compound. Zigzag shaped grooves also create better traction on rocky and gravel surfaces.



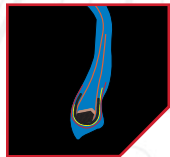
Non-Directional Block Pattern

Provides abrasion and cut resistance on rocky and gravel surfaces; also makes rotating more convenient.



Oversized Angled Lugs

Allow for less void area than the competition, promoting long, even wear and improved traction for the life of the tire.



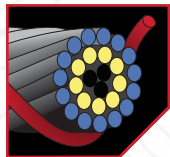
High Turn-Up Carcass Construction

Protects against exterior damage and sidewall cuts; also offers greater lateral stiffness for better riding comfort.



Butress Side Protection

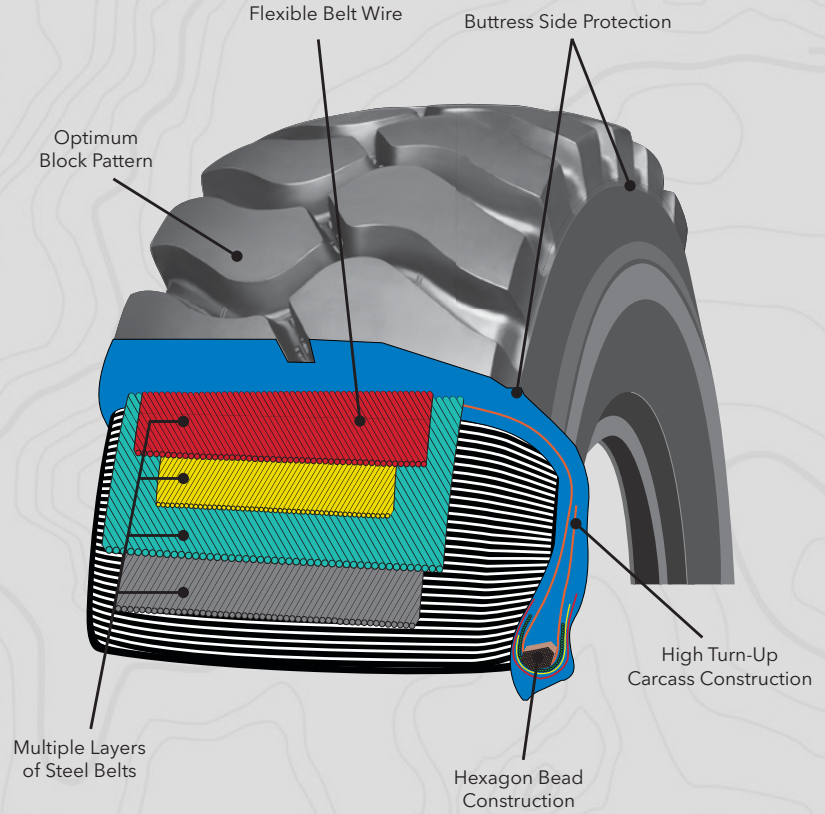
Offers thicker rubber on the upper sidewall and shoulder, protecting against outside damage resulting in fewer snags and cuts.



Flexible OTR Belt Wire

Creates the industry's toughest multi-layer, cross-ply steel belt package to improve overall durability.

PERFORMANCE DESIGNED FROM THE INSIDE OUT



RL45 E-4

Size	Part#	Compound	Star Mark	Groove Depth	Rim Size	Inflated Dimensions		Loaded Dimensions		Ship Weight
						Overall Diameter (in.)	Overall Width (in.)	Static Radius (in.)	Static Width (in.)	
26.5R25	45001	CP	**	76	22.00-3.0	69.3	26.6	31.3	29.3	1158
29.5R25	45003	CP	**	82	25.00-3.5	74.8	30.3	33.9	33.5	1673

RL45 L-4

Size	Part#	Compound	Star Mark	Groove Depth	Rim Size	Inflated Dimensions		Loaded Dimensions		Ship Weight
						Overall Diameter (in.)	Overall Width (in.)	Static Radius (in.)	Static Width (in.)	
26.5R25	45002	CP	*	76	22.00-3.0	69.3	26.6	30.6	30.3	1158
29.5R25	45004	CP	*	82	25.00-3.5	74.8	30.3	33.1	34.4	1673

EQUIVALENT PLY RATING

LOADER			EARTHMOVER		
Tire Size	Star Mark	Ply Rating	Tire Size	Star Mark	Ply Rating
26.5R25	*	UP TO 26 PR	26.5R25	**	UP TO 36 PR
29.5R25	*	UP TO 28 PR	29.5R25	**	UP TO 40 PR