

RT31TM/RT31+TM

RADIAL TIRE

UNMATCHED PUNCTURE-RESISTANCE

- *E-3/L-3 Articulated Dump Trucks, Scrapers and Front-End Loaders*

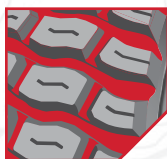
 **YOKOHAMA**



RT31™/RT31+™ RADIAL TIRE

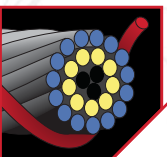
TRACTION. DURABILITY. STRENGTH.

The rugged RT31™/RT31+™ comes equipped with an industry-leading belt package, offering articulated dump trucks, front-end loaders and scrapers some of the best puncture-resistance in the category. Combined with unsurpassed, soft terrain traction, this tire delivers confidence on any job site.



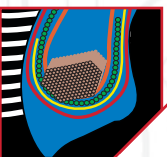
Extra Large Void-To-Lug Ratio

In combination with our non-directional tread, enables greater traction—particularly in soft and muddy terrain.



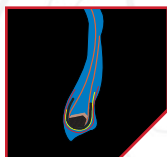
Flexible OTR Belt Wire

Creates the industry's toughest multi-layer, cross-ply, steel belt package to improve durability, puncture-resistance and stability.



Flat Base Hexagonal Bead Construction

Locks the bead in place for greater strength and increased bead base durability. Its high shore hardness rubber bead filler provides strong twist stiffness for even longer life.



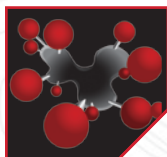
High Turn-Up Carcass Construction

Protects against exterior damage with greater lateral stiffness and improved road stability.



Buttress Side Protection

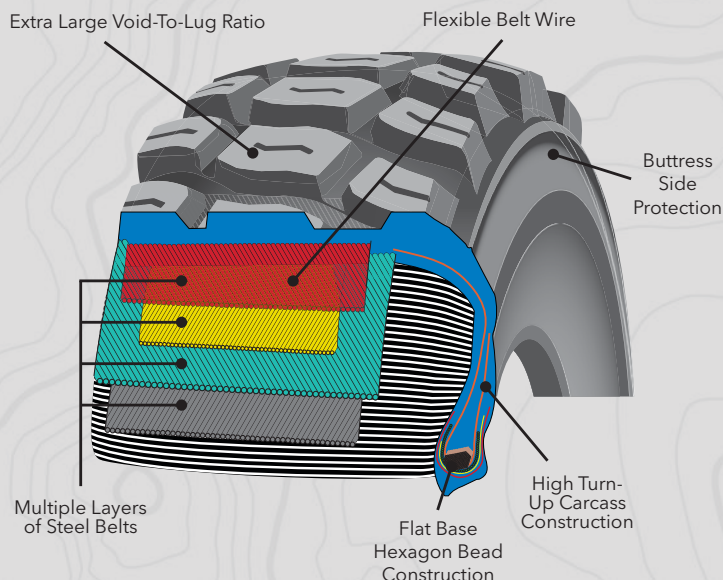
Protects against outside damage resulting in fewer sidewall snags and cuts.



Advanced Tread Compound

Provides outstanding wear, low heat generation and cut resistance; while zigzag shaped grooves provide better traction on muddy and soft ground.

HEAVY-DUTY PROTECTION THROUGHOUT



RT31 E-3/L-3

Size	Part#	TRA Code	Compound	Star Mark (*)	Groove Depth	Rim Size	Inflated Dimensions Overall Diameter (in.)	Overall Width (in.)	Static Loaded Radius (in.)	Static Loaded Width (in.)	Ship Weight
23.5R25	13121	E-3	CP	**	45	19.50-2.5	63.0	24.1	28.3	26.5	692
		L-3	CP	*					27.7	27.3	

RT31 E-3

Size	Part#	TRA Code	Compound	Star Mark (*)	Groove Depth	Rim Size	Inflated Dimensions Overall Diameter (in.)	Overall Width (in.)	Static Loaded Radius (in.)	Static Loaded Width (in.)	Ship Weight
750/65R25	03169	E-3	CP	**	55	24.00-3.0	63.8	29.3	28.7	32.2	976

RT31+ E-3/L-3

Size	Part#	TRA Code	Compound	Star Mark (*)	Groove Depth	Rim Size	Inflated Dimensions Overall Diameter (in.)	Overall Width (in.)	Static Loaded Radius (in.)	Static Loaded Width (in.)	Ship Weight
20.5R25	13120	E-3	CP	**	51	17.00-2.0	58.7	21.1	26.6	23.1	545
		L-3	CP	*					25.9	24.0	
26.5R25	13122	E-3	CP	**	57	22.00-3.0	68.1	26.3	30.6	29.4	1011
		L-3	CP	*					29.9	30.1	

PLY RATING

LOADER

Size	Star Mark (*)	Ply Rating
20.5R25	*	UP TO 20
23.5R25	*	UP TO 24
26.5R25	*	UP TO 26

EARTHMOVER

Size	Star Mark (*)	Ply Rating
20.5R25	**	UP TO 28
23.5R25	**	UP TO 32
26.5R25	**	UP TO 36