

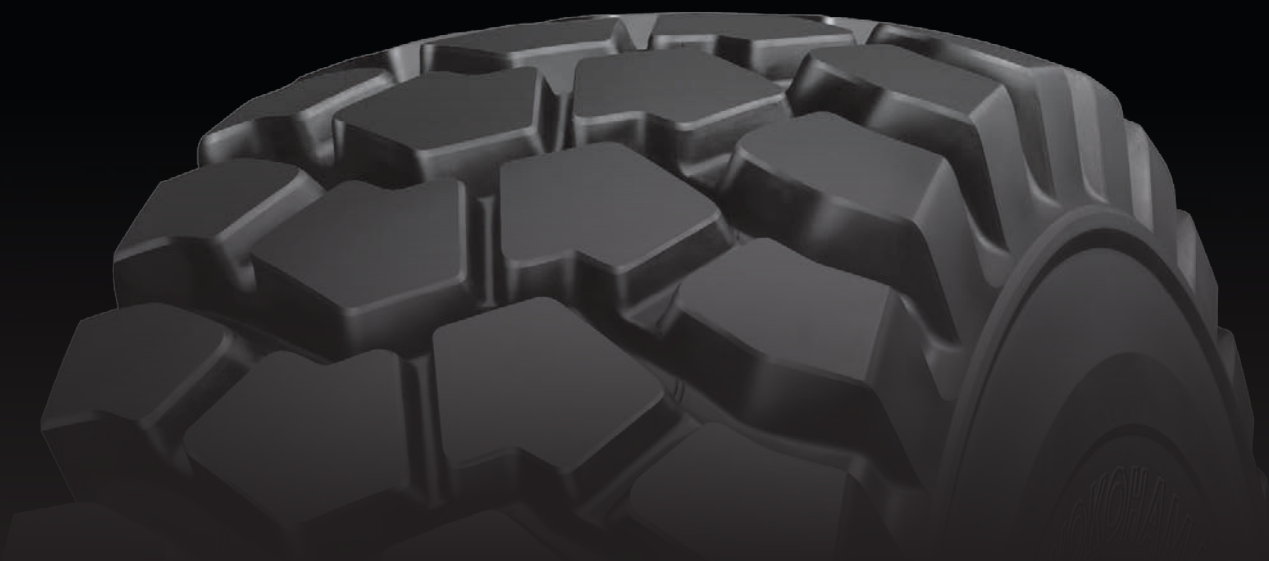
RT41TM

RADIAL TIRE

TOUGH JOBS NEED **TOUGHER TIRES.**

- *E-4/L-4 Articulated Dump Trucks, Scrapers and Front-End Loaders*

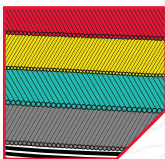
 **YOKOHAMA**



RT41™ RADIAL TIRE

ENGINEERED FOR STRENGTH

The RT41™ is the only tire in its class that offers the power and confidence needed to get the job done right on the most demanding sites. This rugged, long-lasting workhorse is built to resist cuts and snags, and it will never shy away from a challenge.



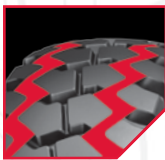
Advanced Belt Package

Improves overall durability, provides resistance to punctures, and creates greater stability on a wide range of surfaces.



Flexible OTR Belt Wire

Creates the industry's toughest multi-layer, cross-ply steel belt package to improve durability, provide resistance to punctures and enhance stability.



Enhanced Tread Compound

Provides outstanding wear and cut resistance while zigzag shaped grooves assure better traction on muddy and soft ground.



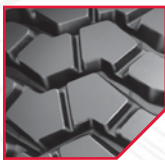
Butress Side Protection

The best in its category, protecting against outside damage for fewer sidewall snags and cuts.



High Turn-Up Carcass Construction

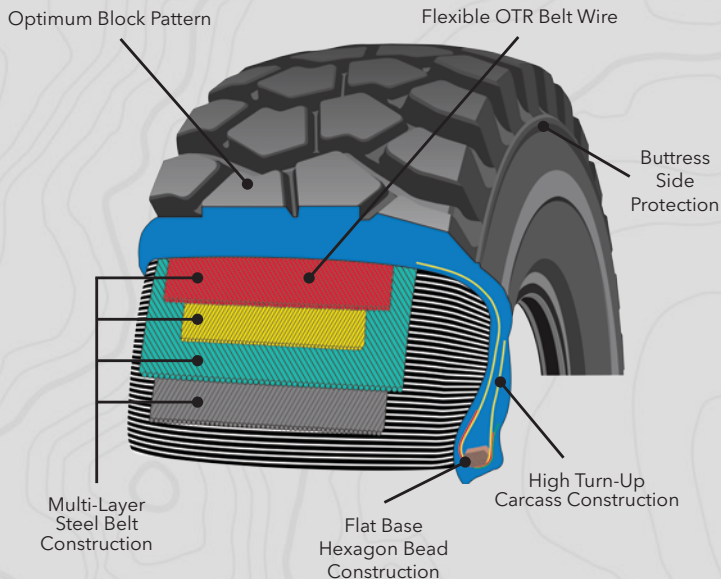
Protects against exterior damage while providing greater lateral stiffness and improved road stability.



Non Directional Block Pattern

Provides both abrasion resistance and excellent traction on soft, rocky and gravel surfaces.

PERFORMANCE DESIGNED FROM THE INSIDE OUT.



RT41 E-4/L-4

Size	Part#	TRA Code	Compound	Star Mark (*)	Groove Depth	Rim Size	Inflated Dimensions Overall Diameter (in.)	Overall Width (in.)	Static Loaded Radius (in.)	Static Loaded Width (in.)	Ship Weight
23.5R25	14151	E-4	CP	**	68	19.50-2.5	63.5	23.9	28.7	26.5	817
		L-4	CP	*					27.9	27.2	
26.5R25	14152	E-4	CP	**	76	22.00-3.0	68.2	26.6	30.7	29.1	1078
		L-4	CP	*					29.8	30.0	
29.5R25	14153	E-4	CP	**	82	25.00-3.5	73.4	29.9	33.3	32.8	1453
		L-4	CP	*					32.8	33.7	

RT41 E-4 CPUG

Size	Part#	TRA Code	Compound	Ply	Groove Depth	Rim Size	Inflated Dimensions Overall Diameter (in.)	Overall Width (in.)	Static Loaded Radius (in.)	Static Loaded Width (in.)	Ship Weight
23.5R25	04128	E-4	CPUG	**	68	19.50-2.5	63.5	23.9	28.7	26.5	819
26.5R25	04126	E-4	CPUG	**	76	22.00-3.0	68.2	26.4	30.7	29.1	1080
29.5R25	04127	E-4	CPUG	**	82	25.00-3.5	73.4	29.9	33.3	32.8	1420

PLY RATING

LOADER

Size	Star Mark (*)	Ply Rating
23.5R25	*	UP TO 24
26.5R25	*	UP TO 26
29.5R25	*	UP TO 28

EARTHMOVER

Size	Star Mark (*)	Ply Rating
23.5R25	**	UP TO 32
26.5R25	**	UP TO 36
29.5R25	**	UP TO 40