

# RL45<sup>TM</sup>

## RADIAL TIRE



### ONE **TOUGH** RADIAL.

- *E-4/L-4 Articulated Dump Trucks, Scrapers and Front-End Loaders*

 **YOKOHAMA**



# RL45™ RADIAL TIRE

## FOR THE TOUGHEST APPLICATIONS

Built to last through the most challenging hauls of E-4 articulated dump trucks and L-4 front-end loaders, the deep tread of the RL45™ delivers longer, even wear on the roughest of surfaces. It also offers added stability, and its sturdy construction offers optimum cut resistance for a longer overall life.



### Advanced Composition

Provides outstanding wear, low heat generation and cut resistance due to an enhanced tread compound. Zigzag shaped grooves also create better traction on rocky and gravel surfaces.



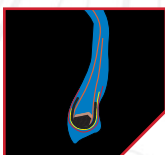
### Non-Directional Block Pattern

Provides abrasion and cut resistance on rocky and gravel surfaces; also makes rotating more convenient.



### Oversized Angled Lugs

Allow for less void area than the competition, promoting long, even wear and improved traction for the life of the tire.



### High Turn-Up Carcass Construction

Protects against exterior damage and sidewall cuts; also offers greater lateral stiffness for better riding comfort.



### Butress Side Protection

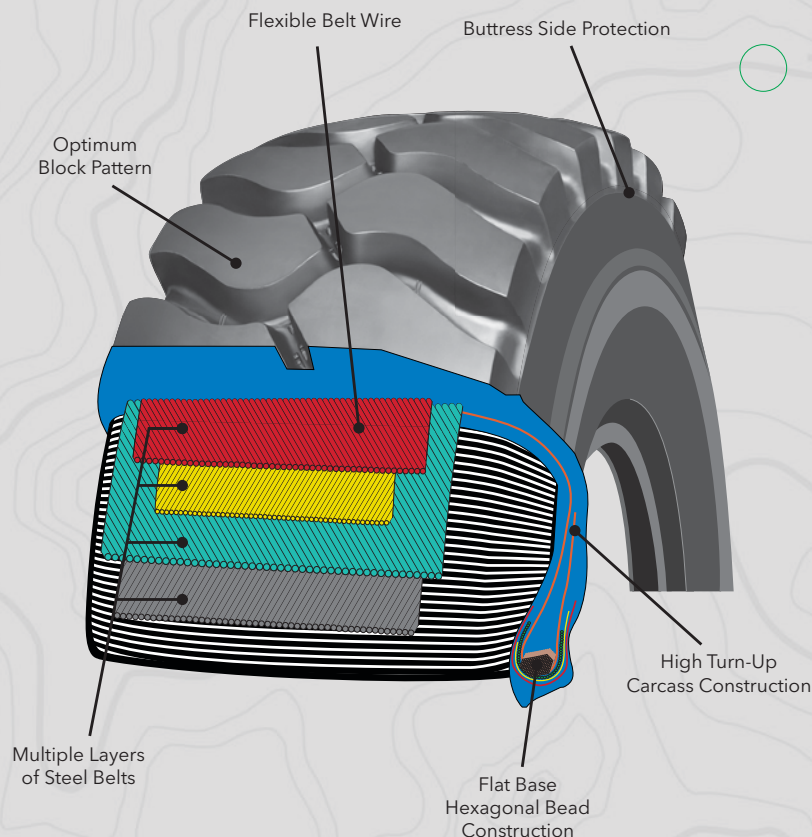
Offers thicker rubber on the upper sidewall and shoulder, protecting against outside damage resulting in fewer snags and cuts.



### Flexible OTR Belt Wire

Creates the industry's toughest multi-layer, cross-ply steel belt package to improve overall durability.

## PERFORMANCE DESIGNED FROM THE INSIDE OUT



## RL45 E-4/L-4

Size	Part#	TRA Code	Compound	Star Mark (*)	Groove Depth	Rim Size	Inflated Dimensions Overall Diameter (in.)	Overall Width (in.)	Static Loaded Radius (in.)	Static Loaded Width (in.)	Ship Weight
26.5R25	14501	E-4	CP	**	76	22.00-3.0	69.3	26.6	31.3	29.3	1158
		L-4	CP	*					30.6	30.3	
29.5R25	14502	E-4	CP	**	82	25.00-3.5	74.8	30.3	33.9	33.5	1673
		L-4	CP	*					33.1	34.4	

## PLY RATING

LOADER		
Size	Star Mark (*)	Ply Rating
26.5R25	*	UP TO 26
29.5R25	*	UP TO 28

EARTHMOVER		
Size	Star Mark (*)	Ply Rating
26.5R25	**	UP TO 36
29.5R25	**	UP TO 40