

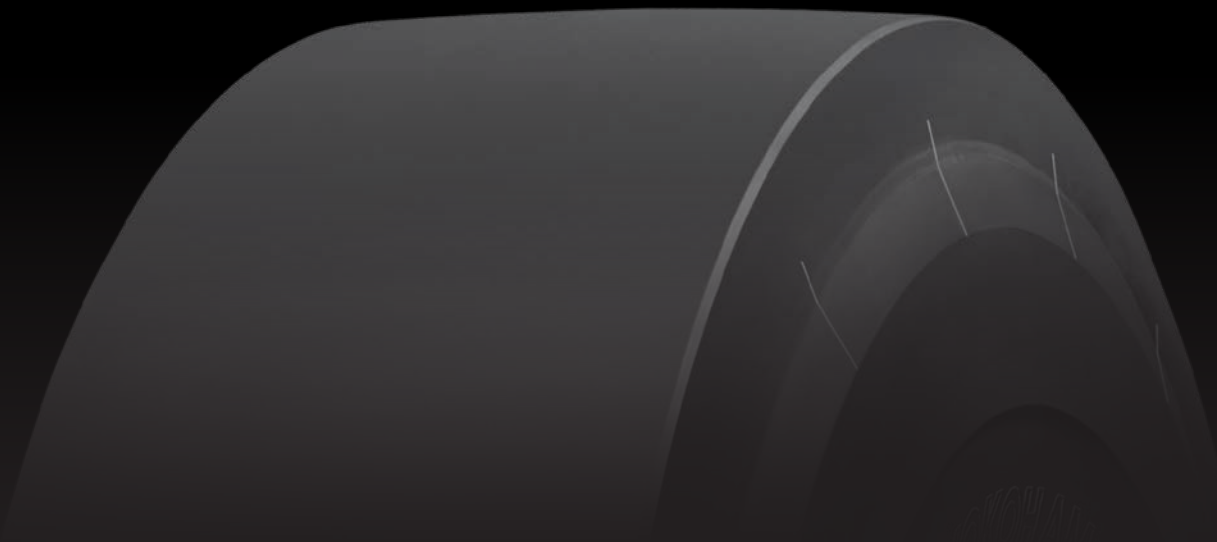
R69™

RADIAL TIRE

LONGER LIFE. HIGHER OPERATING SPEEDS.

- *L-5S Load, Haul, Dump*

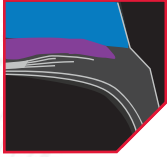
 **YOKOHAMA®**



R69™ RADIAL TIRE

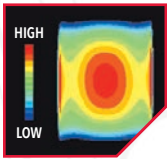
HIGHER SPEEDS, HEAVIER LOADS, LESS DOWNTIME.

Reduce downtime and increase operational efficiency with the all-new R69™. Optimized TMPH is produced through a combination of unique compounds and an advanced radial construction, making this tire ideal for job sites where increased speeds and loads in long-haul operations are necessary.



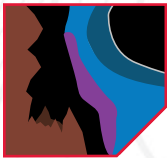
Advanced Compounds

Improve durability by resisting heat build-up and fighting cuts and chips.



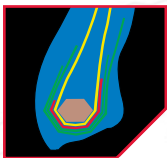
Durable Belt Package and Enhanced Compounds

Create extreme durability and a stable, square footprint to provide excellent cut resistance and deliver longer service life.



High-Angle Sidewall

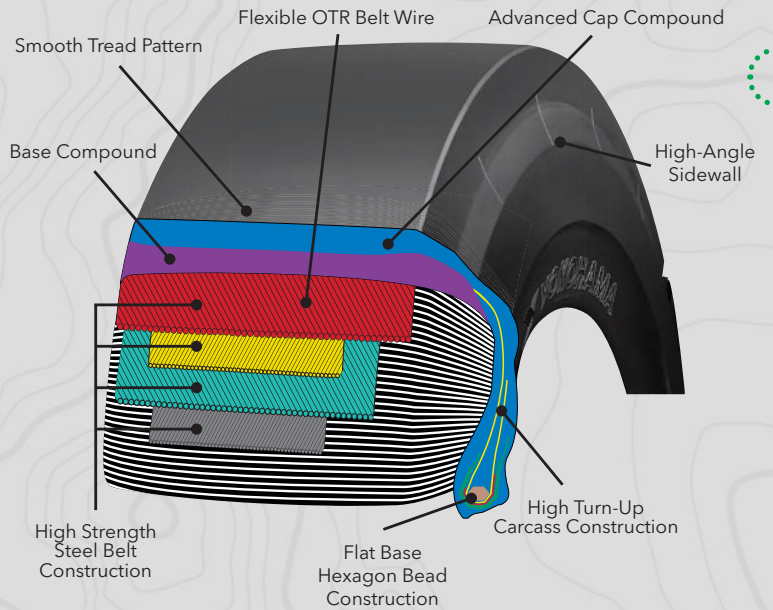
Increases thickness and decreases sidewall stress while providing added protection from obtrusions common to underground excavations.



High Tensile Strength Bead Cores

Create a stronger casing and more extensive rim contact area to lower bead stress and reduce the potential for slippage.

ENGINEERED FOR ENDURANCE.



R69 L-5S

| Size | Part# | Compound | Star Mark | Groove Depth | Rim Size | Inflated Dimensions | | Static Loaded Radius (in.) | Static Loaded Width (in.) | Ship Weight |
|----------|-------|----------|-----------|--------------|-----------|------------------------|---------------------|----------------------------|---------------------------|-------------|
| | | | | | | Overall Diameter (in.) | Overall Width (in.) | | | |
| 18.00R25 | 46901 | CPUG | ** | 107 | 13.00-2.5 | 65.9 | 19.7 | 29.9 | 22.5 | 1152 |